

WinFrog Device Group:	COUNTER
Device Name/Model:	Red Lion Paxi
Device Manufacturer:	Red Lion Controls 20 Willow Springs Circle York PA 17402 Phone: +1 (717) 767-6511 Fax: +1 (717) 764-0839 Email: techsupport@redlion-controls.com
Device Data String(s) Output to WinFrog:	
WinFrog Data String(s) Output to Device:	
WinFrog Data Item(s) and their RAW record:	CABLE COUNT 492

DEVICE DESCRIPTION:

This is a driver that reads the raw cable count and speed from the Red Lion Paxi counter. It also allows the operator to apply compensating scale factors to the raw count and speed data to obtain the actual count and speed data in the correct units. In addition, this driver allows the operator make changes to the counter itself, as well as to reset the counter from WinFrog.

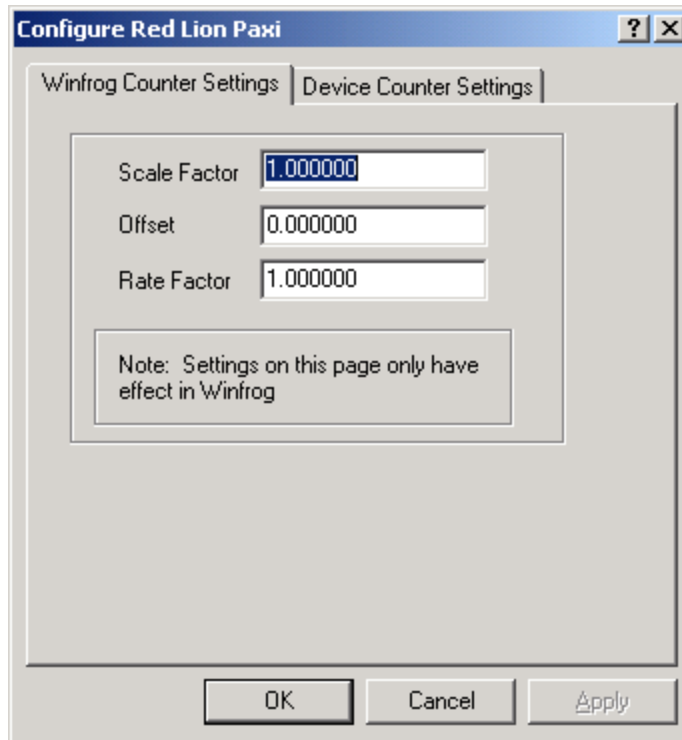
DEVICE CONFIGURATION INSTRUCTIONS

WINFROG I/O DEVICES > EDIT I/O:

Serial
Configurable Parameters

WINFROG I/O DEVICES > CONFIGURE DEVICE:

This device must be configured at the I/O Device window level. In the I/O Devices window, click the device name to select it, then right-click and select Configure Device. The two page Configure Red Lion Paxi dialog box appears, as seen below.



WinFrog Counter Settings Tab

These values are retained within WinFrog; they are not sent to the counter.

Scale Factor:

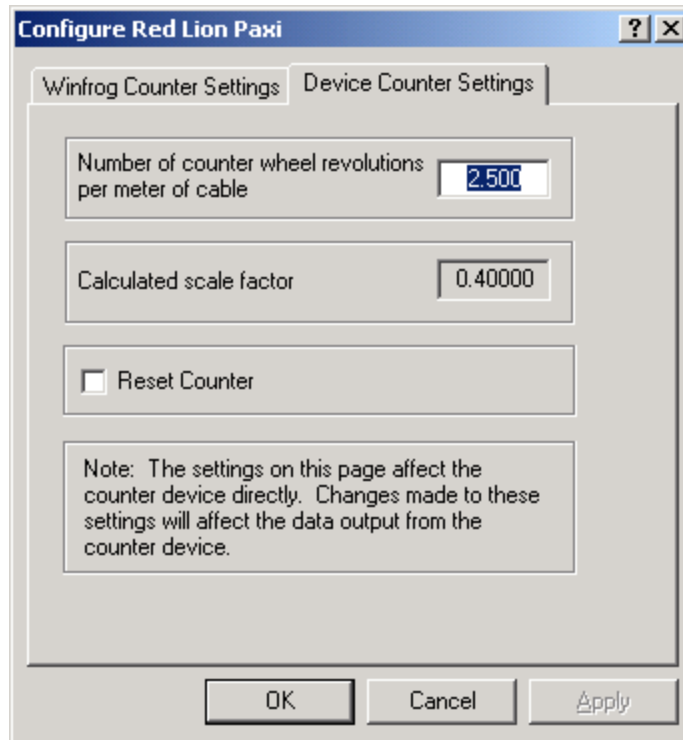
If the operator determines that the incoming cable count is incorrect, possibly due to a mis-calibration of the counter itself, a compensating scale factor can be entered here. This can also be used to convert incoming units to the desired units if necessary. The result must be in meters.

Offset:

This offset is added to the result of the multiplication above. This value must be in meters.

Rate Factor:

The payout rate factor works the same as the Scale Factor where the operator can compensate for a mis-calibration and/or convert the incoming units. The raw rate value from the counter is multiplied by this number. The result must be meters/minute.



Device Counter Settings Tab

As noted in the above figure, entries made in this tab affect the data output from the counter itself.

Number of counter wheel revolutions per meter of cable

As part of the calibration routine it must be determined, as accurately as possible for each cable type, the number of revolutions of the counter wheel to deploy 1 meter of cable. The derived value is entered in this dialog.

Calculated Scale Factor

The Calculated Scale factor is based on the above entry for number of wheel revolutions per meter of cable and can only be changed by changing the value entered in the Number of revolutions field. For example, if it is determined that 5 wheel revolutions will deploy 1 meter of cable, the calculated scale factor will be 0.2.

Reset Counter

Checking this option and closing the window with OK will result in the counter being reset to zero.

WINFROG VEHICLE > CONFIGURE VEHICLE DEVICES > DEVICE DATA ITEM > EDIT:

Adding the Red Lion Paxi device creates the COUNT data item. Once the data item has been added to the vehicle, it must be edited to suit the application.

Data item: COUNTER, Red Lion Paxi, COUNT

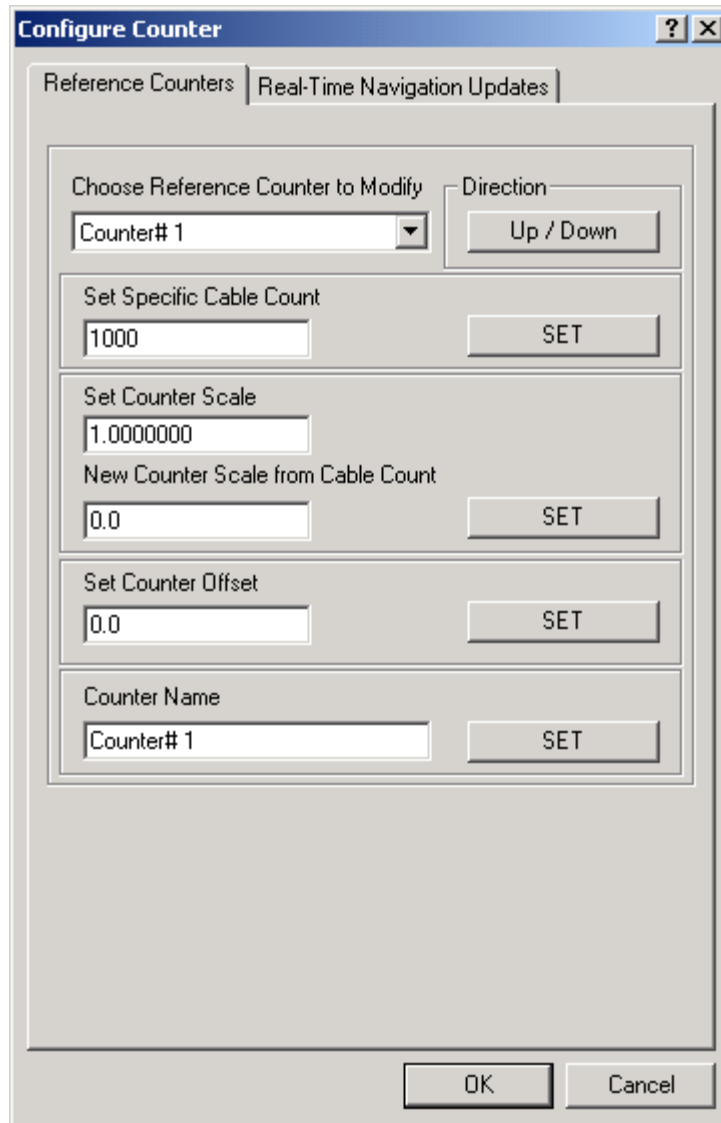
Highlighting the COUNTER, Red Lion Paxi, COUNT data item in the vehicle's device list and clicking on Edit opens the Configure Counter dialog box.

This data item configuration dialog has two pages, the Reference Counters page and the Real-Time Navigation Updates page.

Reference Counters Page

This page (shown below) is used in conjunction with the Calculations window to maintain up to five reference counts based on the Channel One (cable) count. These reference counts are not used for any real-time calculations and are not logged to any file; they are intended for reference purposes only.

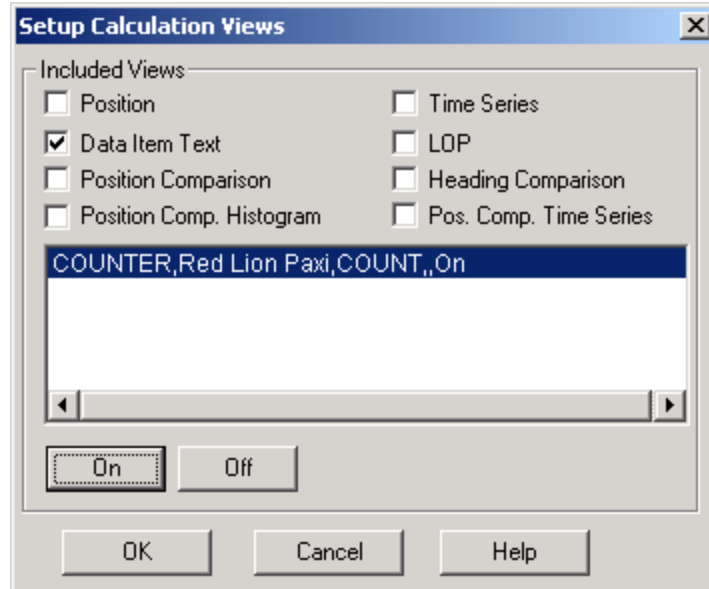
One common use for the Reference Counters page is to have a 'count down' between cable body deployment. This is accomplished by entering the cable spans between cable bodies in the 'Set Specific Cable Count' field(s), selecting the 'Direction' as 'Down' and exiting with OK when the first cable body is launched. The results of this configuration are typically viewed in a Calculations window.



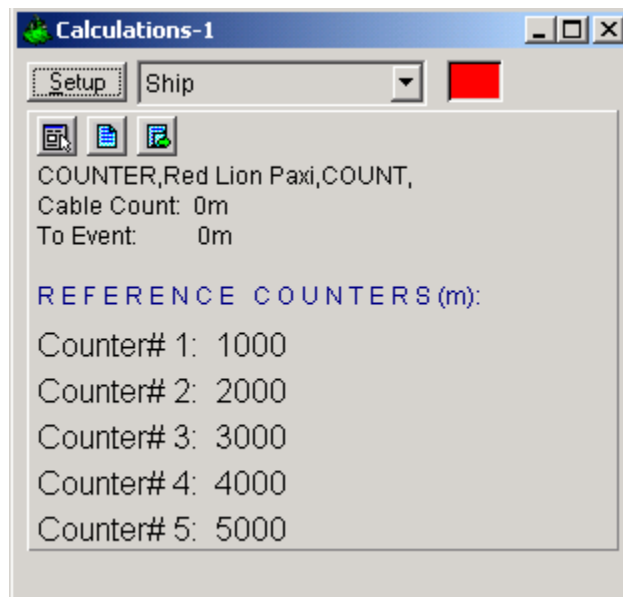
View and configure the Calculations window (shown below) by completing the following steps.


Note: To view the reference counts the COUNT data item must be attached to the vehicle.

1. From the WinFrog View menu select the Calculations item to open the Calculations window.
2. In the Calculations window click the Setup button to open the Setup Calculation Views dialog box shown below.



3. In the Setup Calculation Views dialog select the Data Item Text checkbox. Then turn On the COUNT data item by selecting the COUNT data item from the list and click the On button.
4. Click OK and the Calculations window opens as seen below.



Once the Calculations window has been opened and configured, the five reference counters can be modified using the Reference Counters page of the Configure Counter dialog. (Note: the Configure Counter dialog can be directly accessed from the Calculations window by clicking the  icon in the Calculations window.)

The Reference Counter page allows the reference counters to be modified in a number of ways, as described below. Start by selecting the reference counter to be modified from the drop down list box at the top of the page.

Direction

When the *Up/Down* button is not depressed the reference count will increase if the input cable count increases and decrease if the input cable count decreases. When the *Up/Down* button is depressed the reference count will decrease if the input cable count increases and increase if the input cable count decreases.

Set Specific Cable Count

To set the reference counter to a specific cable count, enter the desired value in the edit field then click the *Set* button. When the Configure Counter dialog OK button is then clicked the desired reference counter value will be set to the entered value. This value will then continue to increment or decrement based on the input cable count and the current settings for the reference count.

Set Counter Scale

To change the scale at which the reference count will increment or decrement relative to the input cable count, enter the desired scale factor into the scale field. Leave the *New Counter Scale from Cable Count* value at its present value to apply the scale from the current point onward. Enter a count value into the *New Counter Scale from Cable Count* field to apply the scale from a previous count value onward. Once the desired scale factor and count value is entered click the *Set* button and then click the *OK* button.

Set Counter Offset

To set an offset from the input cable count to the reference count, enter the desired value into the Set Counter Offset field, click the *Set* button and then click the *OK* button. This value will be added to the input cable count.

Counter Name

To change the reference counter name, enter the desired name into the *Counter Name* field. Click the *Set* and then the *OK* button to enter the change.

Real-Time Navigation Updates Page

The screenshot shows a 'Configure Counter' dialog box with two tabs: 'Reference Counters' and 'Real-Time Navigation Updates'. The 'Real-Time Navigation Updates' tab is active. It contains several sections for configuring data logging and vehicle data passing:

- Interval:** A text box containing '1.0 s' with a label 'Enter Raw Data File Logging Interval in Seconds, 0=All Data'.
- Channel 1 (Telephone / Power Cable):** Contains three checkboxes: 'Cable Count' (checked), 'Payout Speed' (checked), and 'Tension' (unchecked).
- Channel 2 (Tow Cable):** Contains three checkboxes: 'Cable Count' (checked), 'Payout Speed' (checked), and 'Tension' (unchecked).
- Channels 3,4,5 Tension:** Contains three checkboxes: 'LCE Tension (Channel 3)' (unchecked), 'CDE 1 Tension (Channel 4)' (unchecked), and 'CDE 2 Tension (Channel 5)' (unchecked).
- General:** Contains two checkboxes: 'Distance to Event' (unchecked) and 'Cable Angle' (unchecked).

At the bottom of the dialog are 'OK' and 'Cancel' buttons.

This page enables/disables certain data from this device to be passed to the vehicle. Unlike the Reference Counters page, data from the Real-Time Navigation Updates page can be logged to the raw files if this data item is associated with a vehicle. This allows the vehicle to have more than one COUNT without one conflicting with the other. One COUNTER device may provide the telephone cable count while the other provides the tow count. If a checkbox is selected (checked) the data value will be passed to the vehicle. For example, if the *Cable Count* checkbox is selected in the *Channel 1* section, then the cable count from the input device will be passed to the vehicles channel 1 count.

It is important to note that if the data string from the counter device does not contain certain data types (count, tension or speed), these options should not be selected from this page. Selecting an option for which there is no data in the string causes

WinFrog to assign a zero in the selected field and it may result in valid data from other sources being overwritten with zeroes.

The *Interval* section sets the data logging interval used when the “With Events” Logging Control option is selected (refer to chapter 10 of the WinFrog User’s Guide for more information).